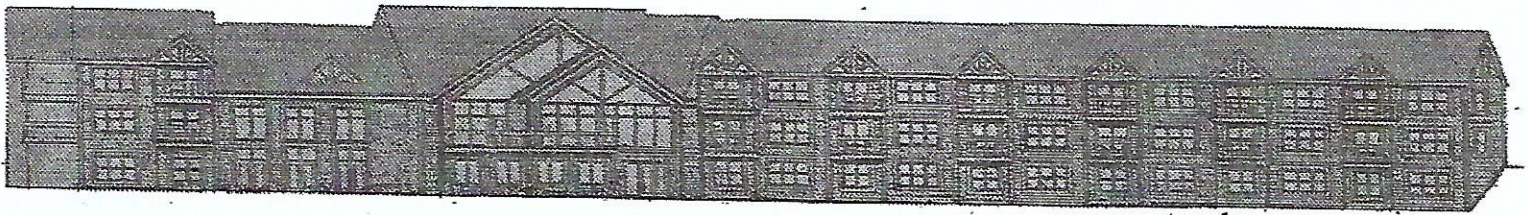
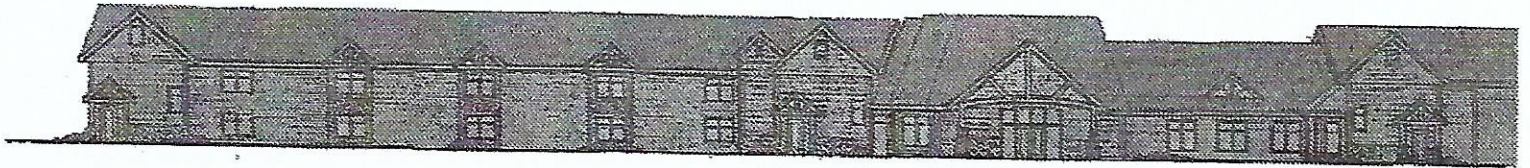


Lake Superior View Golf and Resort

Elevations



SOUTH ELEVATION
SCALE 1/8"=1'-0"

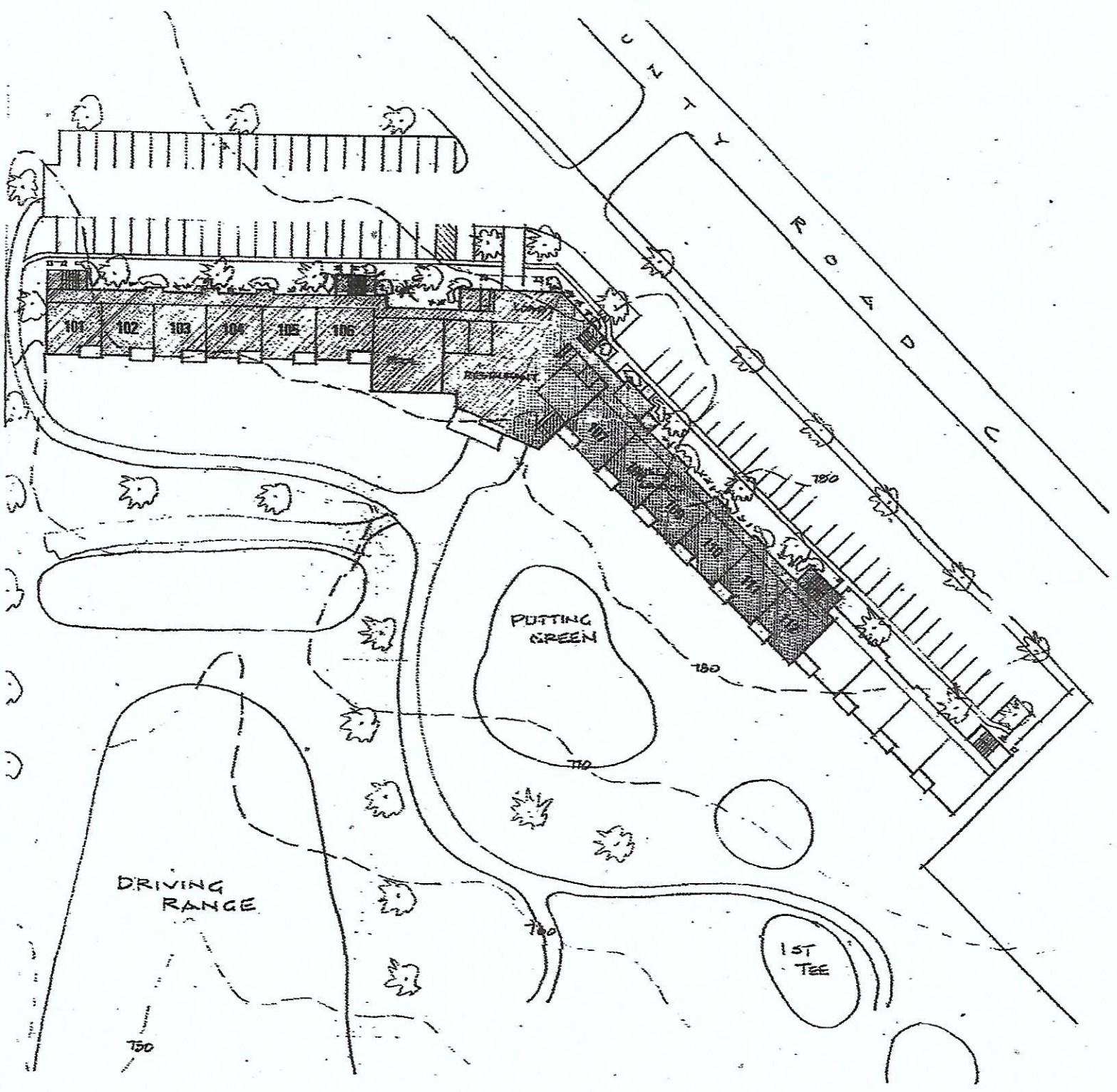


NORTH ELEVATION
SCALE 1/8"=1'-0"

Mid States Development, INC.
Toll Free 1-888-297-2225
www.midstatesdevelopment.com
info@lakesuperiorviewgolfandresort.com

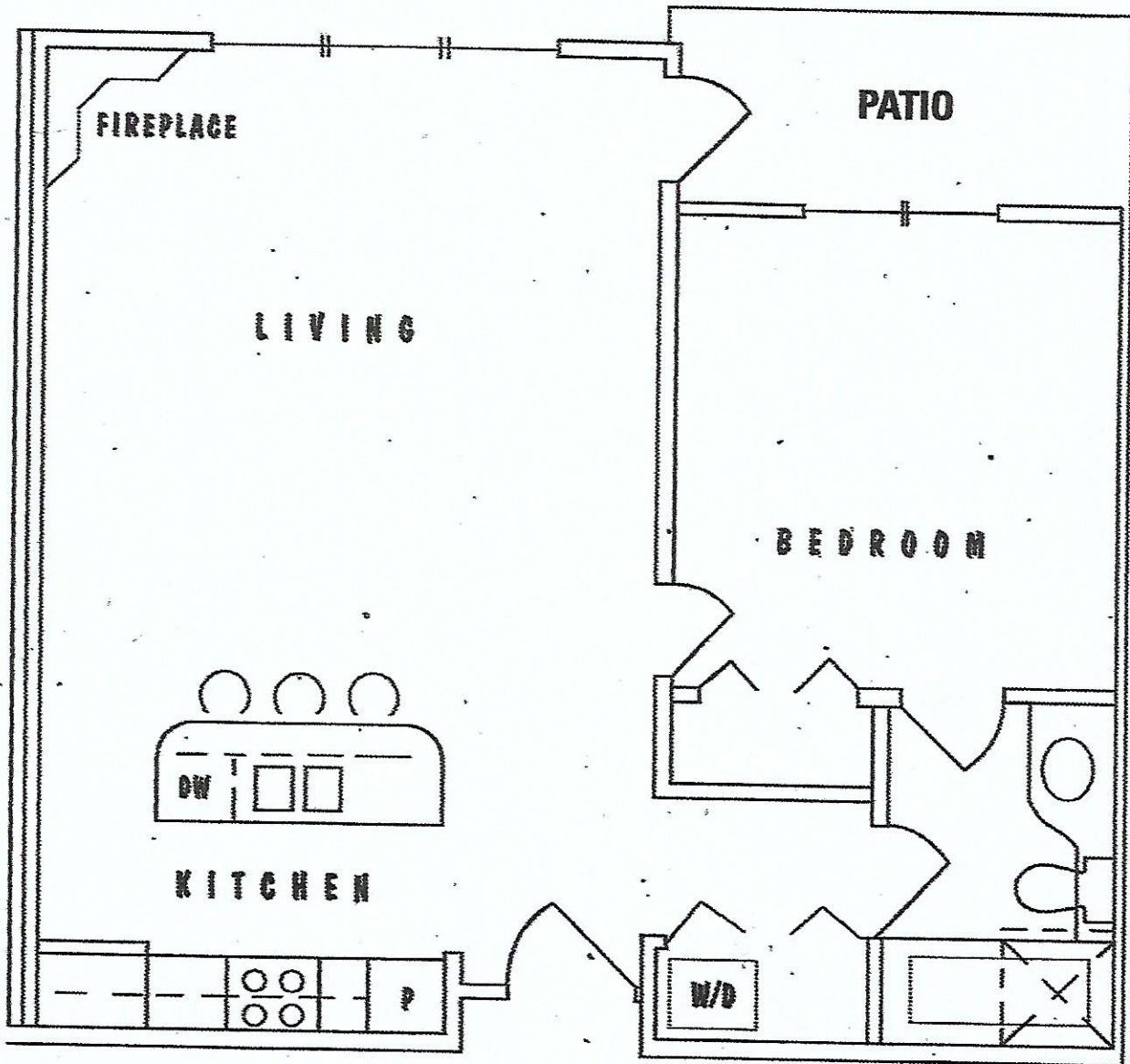
Lake Superior View Golf and Resort

Site Plan With Golf Course



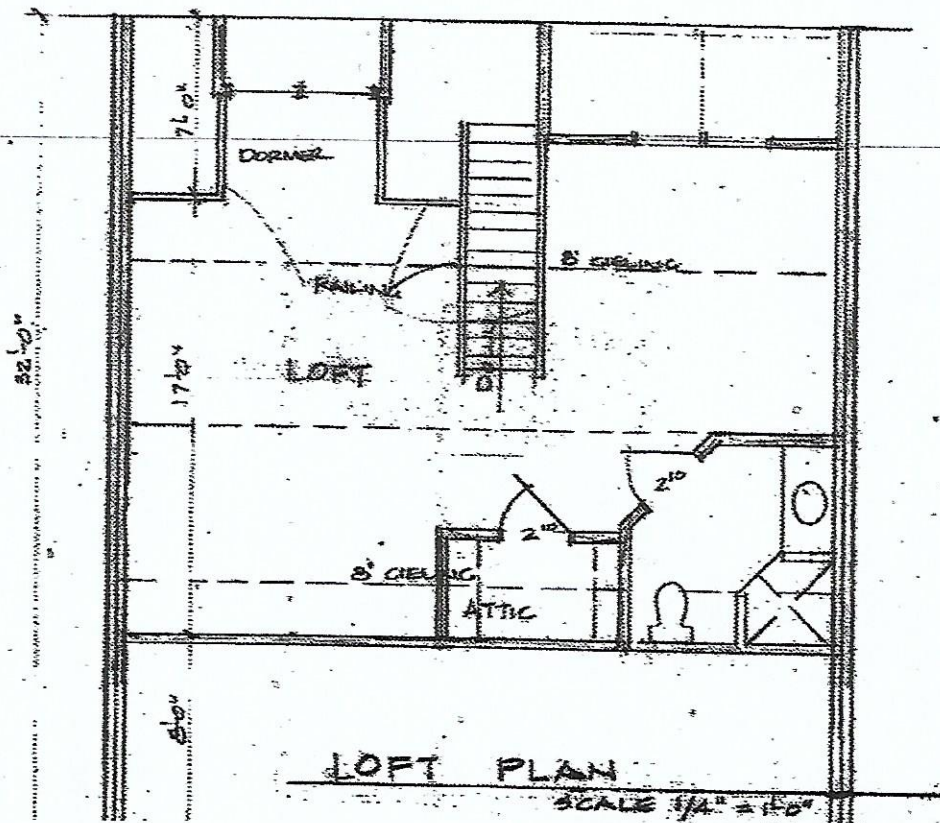
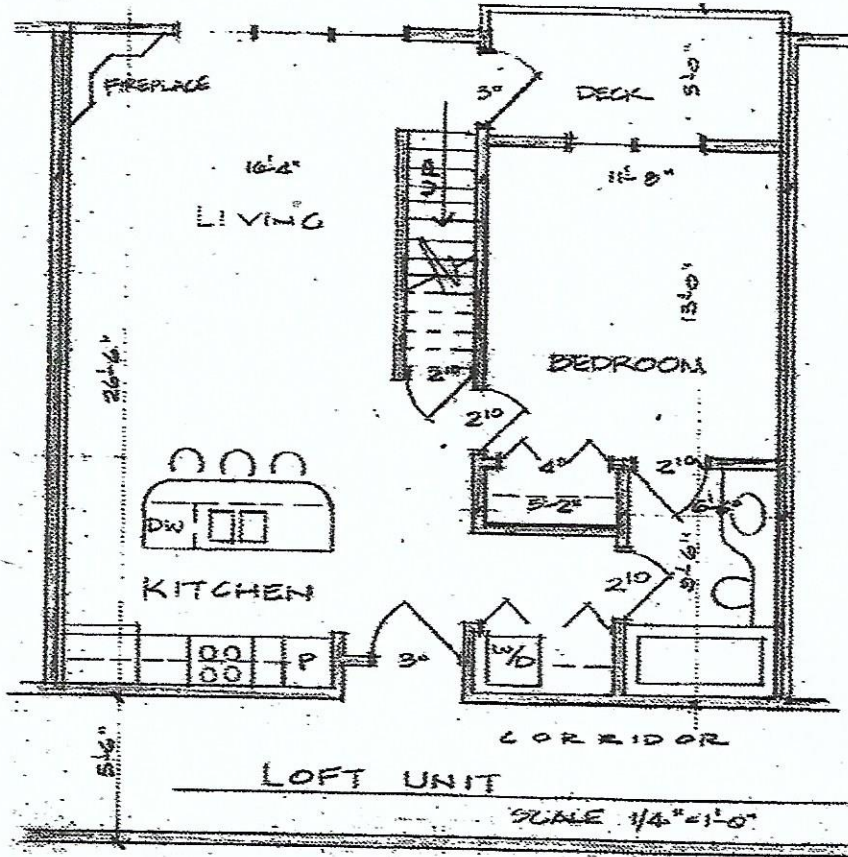
Lake Superior View Golf and Resort

Units 101-112
754 sq. ft. (includes patio)



Lake Superior View Golf and Resort

3rd Floor Plan with Loft Units 301-312
 1300 sq. ft. (includes loft and deck)



Lake superior view Golf & resort



Bayfield County
Washburn, Wisconsin

Standard Furnishings for Condos

Living Room

- 1 Queen sleeper sofa
- 2 Occasional chairs
- 2 End tables
- 1 Cocktail table
- 1 25" Color television
- 1 Television armoire
- 2 Lamps
- 2 Artwork
- Heater-AC Unit

Kitchen

- 3 Bar Stools
- 1 Kitchen efficiency package
(stove, refrigerator, garbage disposal, microwave, dishwasher, small appliances, linens)
- 1 Artwork

Bathroom(s)

- 1 Towel/bathmat package
- 1 Shower curtain

Patio/Balcony

- 2 Sling chairs
- 1 22" Cocktail table

Bedroom

- 1 Queen headboard
- 1 Queen mattress, boxspring set
- 1 Queen bedspread
- 1 Set sheets, pillows, mattress pad, blanket
- 1 Queen frame
- 2 Night Stands
- 1 Television stand
- 1 19" Color television
- 1 4-drawer chest
- 1 Mirror
- 1 Clock radio
- 2 Lamps
- 2 Artwork

Loft

- 1 Queen sleeper or Queen bed
- 1 Occasional chair
- 1 End table
- 1 Computer desk
- 1 Desk chair
- 2 Lamps
- 2 Artwork